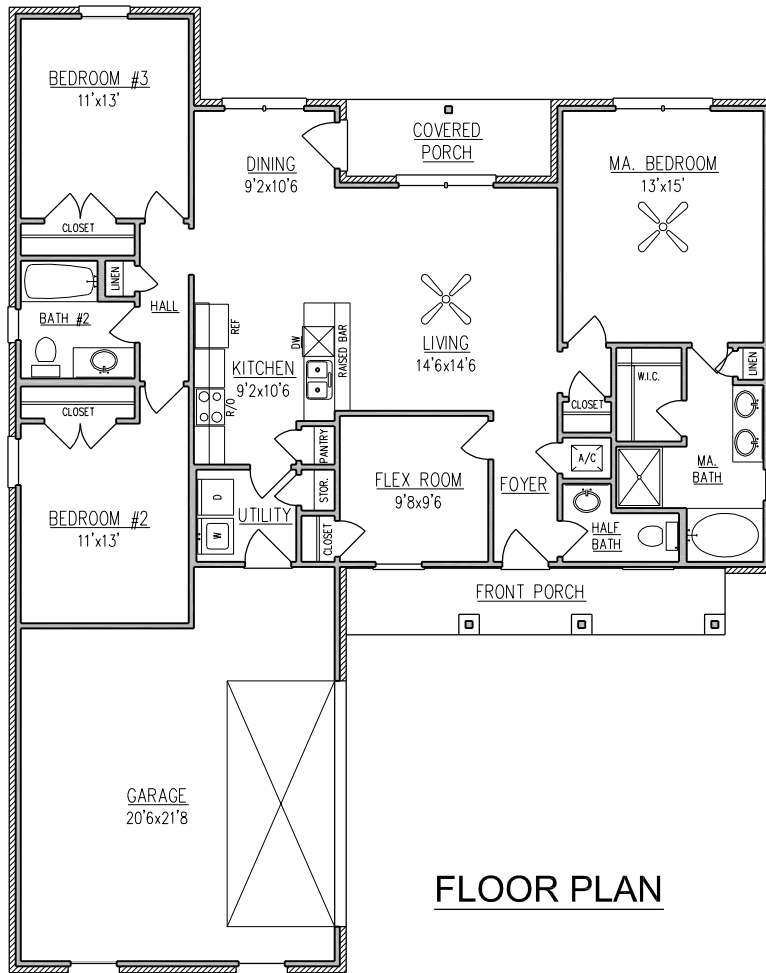


STERLING

1,573 SQ. FT.



ELEVATION (D)



FLOOR PLAN

WIDTH - 49'-10"
DEPTH - 62'-10"

NOTE: ALL DIMENSIONS APPROXIMATE



For more information call:
(251) 473-8600 Office
1-800-924-7288 Toll Free
Or visit our website at www.brickhome.net

STERLING

1,573 SQ. FT.



ELEVATION (A)



ELEVATION (B)



ELEVATION (C)

NOTE: ALL DIMENSIONS APPROXIMATE



For more information call:
(251) 473-8600 Office
1-800-924-7288 Toll Free
Or visit our website at www.brickhome.net

BROCHURE IS AN EXAMPLE NOT AN EXACT REPRESENTATION. ELEVATION AND FEATURES MAY DIFFER.