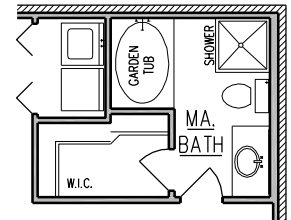
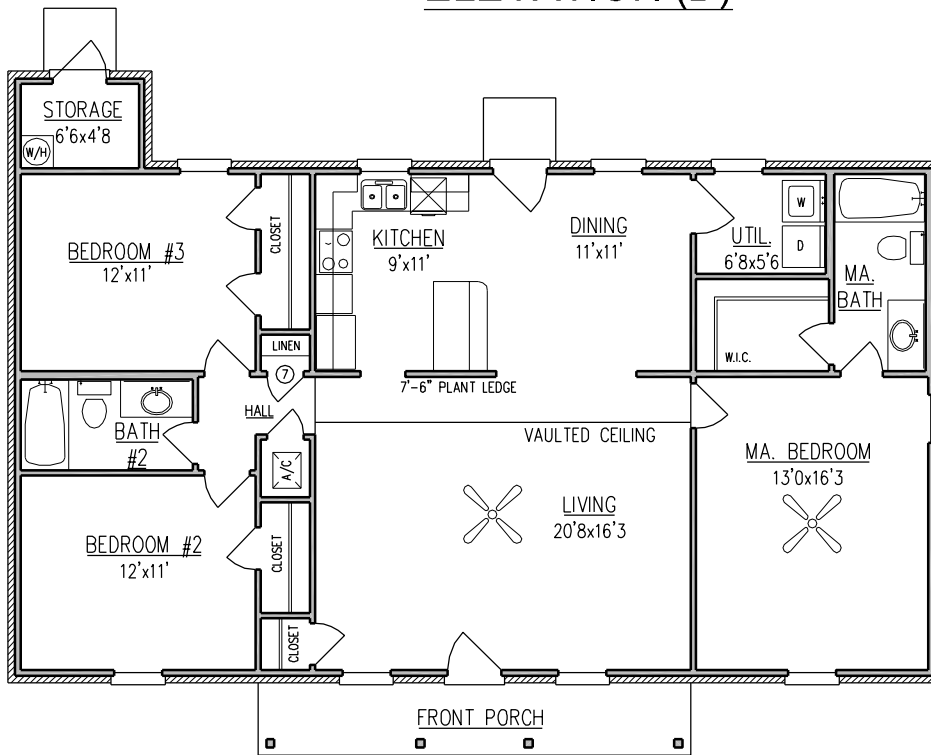


# ANSLEY II

1,500 Sq. Ft.



ELEVATION (D)



OPTIONAL  
MA. BATH.

FLOOR PLAN

WIDTH - 51'-10"  
DEPTH - 38'-0"

NOTE: ALL DIMENSIONS APPROXIMATE



For more information call:  
(251) 473-8600 Office  
1-800-924-7288 Toll Free  
Or visit our website at [www.brickhome.net](http://www.brickhome.net)

# ANSLEY II

1,500 Sq. Ft.



ELEVATION (A)



ELEVATION (B)



ELEVATION (C)

NOTE: ALL DIMENSIONS APPROXIMATE



For more information call:  
(251) 473-8600 Office  
1-800-924-7288 Toll Free  
Or visit our website at [www.brickhome.net](http://www.brickhome.net)

BROCHURE IS AN EXAMPLE NOT AN EXACT REPRESENTATION. ELEVATION AND FEATURES MAY DIFFER.